



Welcome to  
Hachioji!



Complete Guide to  
Hachioji

## The Bustling City Center Guide to the Hachioji Station Area

**Koshu-Kaido Highway**  
Many shops established in olden times and reminiscent of a post town remain in the Yoka-machi and Yokoyama-machi areas situated alongside the Koshu-Kaido Highway. The Hachioji Yume Art Museum and Yoka-machi Yumekaido Parking were completed in 2003 to produce a unique panorama that integrates both old and new town scenery.



**Renga Dori**  
A relatively peaceful road scattered with restaurants, grocery stores, a bookstore and other shops. Certain select shops are popular with young people, and window-shopping can be very enjoyable here.



**Higashi Hoshasen I Road**  
A useful road for planning meet-ups with many fast food shops and cafes. Keio Hachioji Station connects directly with the Keio Shopping Center, and the surrounding area is always bustling with passengers and shoppers.



### Black Wall and Hachioji Geisha Girls

Hachioji flourished as the largest post town along the Koshu-Kaido from the end of the Edo Period to the beginning of the Showa Period, and in the center of the city was a large collection of restaurants and an entertainment district with bars served by more than 100 geisha girls. The remaining part of the Black Wall displays the prosperity of those bygone days.



### Nishi Hoshasen You Road

A shopping street known for its restaurants, bars and shops. In addition to places to take a carefree break, there are also many unique and fashionable shops. The perfect road for both shopping and dining.



### Hachioji Station North Exit Square

The large promenade immediately outside the station is called the Mulberry Bridge since Hachioji has been known as a textile town with a large number of mulberry trees. Many buses arrive and depart right underneath the promenade.



Spring

2nd Sunday of March  
Walking through Hot Embers/  
Hiwatari-sai  
(Takaosan Yakuoin Motor Vehicle  
Blessing Site)

Early March  
Takao Baigo Plum Blossom Festival  
(Takao Baigo)  
Early April  
Takiyama Cherry Blossom Festival (Ruins of Takiyama Castle)  
Mid-April  
Flowers and Greenery Community Development Fair  
(Nishi Hoshasen You Road)  
From April to May  
Stamp hike  
(Mt. Takao)  
Festival of Foliage/  
Takaosan  
Wakaba Matsuri  
(Mt. Takao)  
Early May  
Boy's Day Festival/  
Nagabusa  
Fureai Tango Matsuri  
(Minamiasakawa)



Summer

From late June to early October  
Summer Evening  
Beer Garden (Mt. Takao)  
Early July  
Hozuki  
(Japanese Cherry)  
Festival  
(Shinshoin temple in Dai-machi)  
Hachioji Summer Festival  
(Nishi Hoshasen You Road)  
Late July  
Dango (Dumpling) Festival  
(Sengen Shrine in Dai-machi)  
Hachioji Fireworks Display  
(Hachioji Public Baseball Stadium)  
Early August  
Hachioji Festival  
(Koshu-Kaido Highway)



Autumn

September 23  
Baby Crying Sumo Contest  
(Koyasu Shrine in Myojin-machi)  
From September to October  
(tentative)  
National Grand Pottery Fair/Hachioji Bargain Market  
(Nishi Hoshasen You Road)  
October–November  
Stamp hike  
(Mt. Takao)  
Mid-October  
Hachioji Messe Open-Air Market  
(Nishi Hoshasen You Road)  
November  
Festival of Autumn  
Leaves/  
Takaosan  
Momiji Matsuri  
(Mt. Takao)  
Mid-November  
JA Hachioji  
Agricultural  
Festival  
(Fujimori Park)  
Ginkgo Festival/  
Hachioji Icho  
Matsuri  
(Koshu-Kaido Highway)



## Hachioji Products

**Hachioji Textiles**  
Hachioji textiles are historically as famous as Kiryu and Nishijin textiles since the Edo Period. Knitwear, neckties, and scarves are produced with the use of this technology. They can be purchased at the Benec shop operated directly by the Hachioji Association for the Promotion of Traditional Craft Industries.



Benec ☎ 042-628-0891

**Tokyo Kokeshi Dolls**

The main characteristics of the Kokeshi dolls are their large heads, small faces, and the rings that appear suddenly around their necks during the manufacturing process. Seasonal blossoms are delicately hand-painted on their faces to produce an extremely cute effect.



Okura  
Mokkoshō  
Woodcraft  
☎ 042-622-2978



**Local Hachioji Rice Wine**  
Sake named after places associated with Hachioji



Kuwanomiyako  
Ozawa Brewery  
☎ 042-624-1201  
Ujiuiri sake by  
Kiyobare  
☎ 042-620-5520

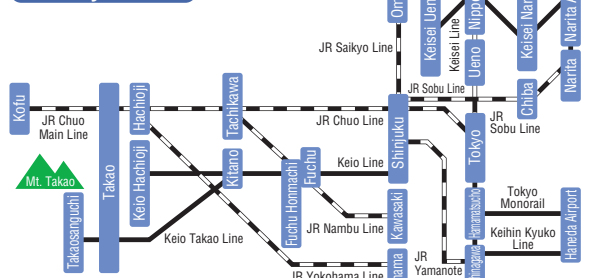
## Hachioji Access Guide

Required times are estimated and may differ in accordance with times of the day and traffic conditions.

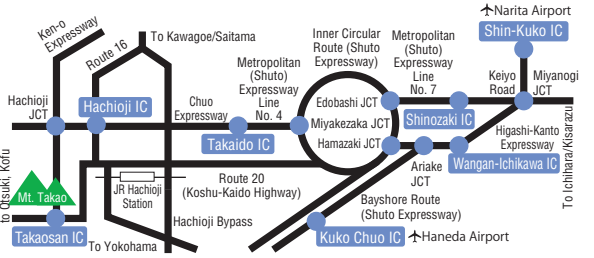
### Required times from each station terminal

- From Shinjuku Station  
Approximately 40 minutes to Hachioji Station on the JR Chuo Special Rapid.  
Approximately 35 minutes to Keio Hachioji Station on the Keio Special Express.  
Approximately 50 minutes to Takaosanguchi Station on the Keio Takao Line Special Express.
- From Kawasaki Station  
Approximately 1 hour 10 minutes to Hachioji Station via Tachikawa on the JR Nambu Line.
- From Yokohama Station  
Approximately 1 hour to Hachioji on the JR Yokohama Line.

### Railway Access



### Vehicle Access



The admission fees listed for each facility are the adult fees.  
The closing times listed are the day's final admission times.  
The details listed are current as of March 2014.  
Please be sure to check all details before determining your itinerary.

Date of issue: March 2014  
Issued by the Hachioji Tourism  
Association (Hachioji-Kankokyokai)  
Address: TC Building 5F, 10-2 Asahi-cho, Hachioji

☎ 042-643-3115  
Fax: 042-643-3110  
HP: <http://www.hachioji-kankokyokai.or.jp/>

## Dining Hachioji Gourmet

### Hachioji Ramen

Hachioji Ramen is a local soup noodle with a long history. All of the ramen restaurants established their own individual taste through trial and error, and they have the following features:

1. Soy-base soup
2. A layer of oil on the surface
3. Use chopped onions as the topping

The darkness of the soy sauce gives the soup a deep color with a light, delicious taste that will surely be one of your best eating experiences in Japan.

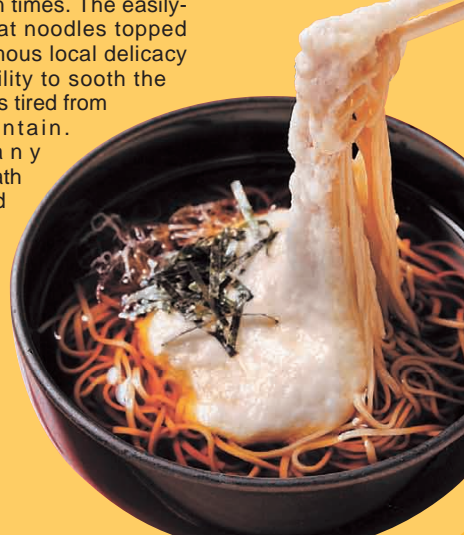
Why not give Hachioji Ramen a try?

Information on Hachioji Ramen is available on the Hachioji Ramen Society homepage.  
URL: <http://www.hachimen.or.jp/>



### Mt. Takao Tororo-Soba

Mt. Takao has been known as a spiritual mountain since olden times. The easily-digestible buckwheat noodles topped with tororo are a famous local delicacy said to have the ability to soothe the fatigue of worshippers tired from climbing the mountain. There are many restaurants on the path up the mountain and at the summit that serve Tororo-Soba. The beautiful nature of Mt. Takao and its famous cuisine perfectly complement a hike or a pilgrimage to the Yakuoin Temple.



## Places to See Interesting Hachioji Sightseeing Spots and News

### Hachioji food and souvenirs

#### Michinoeki Hachioji Takiyama MAP F-2

Metropolitan Tokyo's first urban-style roadside station. Hachioji souvenirs such as agricultural produce, a food court, and other directly-operated commodities are available inside.  
Address: 1-592-2 Takiyama-machi, Hachioji  
☎ 042-696-1201  
HP: <http://www.michinoeki-hachioji.net/>  
Business hours: 9:00 a.m. - 9:00 p.m. (parking lot and restrooms open 24 hours)  
Access: 3-minute walk from the Michinoeki Hachioji Takiyama Iriguchi bus stop.



### National Records & Intangible Folklore Cultural Assets Tokyo Metropolitan Intangible Folklore Cultural Assets Hachioji Kuruma Ningyo

Kuruma Ningyo is a form of one-man puppet handling, where the puppeteer sits on a wheeled box called a *rokuro-sha* to control the puppet. This is the world's only puppet show where the puppets perform on stage with their feet touching the stage. The Nishikawa Koryuza theater in Shimo-Ongata-Machi has succeeded this tradition and is currently actively promoting it overseas.



Nishikawa Koryuza ☎ 042-652-1222

### Outlet park designed in the image of southern France

#### Mitsui Outlet Park Tama Minamiosawa MAP G-5



An exciting shopping spot lined with many popular outlet stores. Enjoy easy access to money-saving shopping close to the station.  
Address: 1-600 Minami-Osawa, Hachioji ☎ 042-670-5777  
Business hours: Shopping: 10:00-20:00 Meals: 11:00-22:00  
Access: Located immediately after Minami-Osawa Station on the Keio Sagami-hara Line. Parking: Available (toll)

### Nostalgic buses and trucks on display

#### Hino Auto Plaza MAP E-4

A museum that shows the history of Hino trucks and buses. A wide range of exhibits are available, from old-fashioned bonnet buses, the actual car that won the Paris-Dakar Rally, and many different engines.

Address: 5-28-5 Minami, Hachioji (Housed in the Hino Motors 21 Century Center) ☎ 042-637-6600 HP: <http://www.hino.co.jp/au/plaza/> Business Hours: 10:00 a.m. to 4:00 p.m. (Last admission at 3:00 p.m.) Closed: Sundays, the 1st, 3rd, and 5th Saturdays of the month, spring holidays, summer holidays, the end and beginning of the year, temporary closings  
Admission: free of charge Access: 20 minutes from Hachioji Minamino Station on the JR Yokohama Line Parking: Available



Direct trains  
from Shinjuku  
to Takaosanguchi  
on the Keio Line!



On weekdays, the **Special Express for Takaosanguchi Station** departs every 20 minutes throughout the day. On Saturday and holidays the **Semi-Special Express for Takaosanguchi Station** departs every 20 minutes throughout the day. The train departs from Platform 3.

On Special Express trains bound for Keio-hachioji, get off at Kitano Station and transfer to a local train bound for Takaosanguchi.

[www.keio.co.jp](http://www.keio.co.jp)



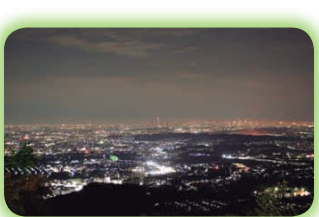
Kiyotaki cable car station



Takao violets



Goblin cakes (Tengu-yaki), a Mount Takao specialty



Night view from the observation deck

Why not take a small trip to Mount Takao, where natural beauty, simple tastes, and seasonal charms await you?



Cable car



Chair Lift



Monkey Park and Wild Plant Garden



Takaosan Yakuoin Yuki Temple



Linking Mount Takao and people

### Takao Tozan Railway

Takao Tozan Railway Co., Ltd. 2205 Takaomachi, Hachioji-shi, Tokyo  
TEL 042-661-4151 <http://www.takaotozan.co.jp>

## Hotels

### Hachioji Station Area

<b>R &amp; B Hotel Hachioji</b> MAP A-4	2-26-9 Myojin-cho	☎ 042-631-1515
<b>Keio Plaza Hotel Hachioji</b> MAP B-4	14-1 Asahi-cho	☎ 042-656-3111
<b>Sankei City Hotel Hachioji</b> MAP B-2	60-1 Tera-machi	☎ 042-622-3388
<b>Sunhotel Hachioji</b> MAP F-3	3-5-7 Koyasu-machi	☎ 042-644-4141
<b>C's Inn Hachioji</b> MAP B-2	43-2 Tera-machi	☎ 042-625-0051
<b>Central Hotel Hachioji</b> MAP F-3	6-7 Uneno-machi	☎ 042-625-1311
<b>Chiyoda Hotel</b> MAP C-3	4-1 Asahi-cho	☎ 042-624-3281
<b>Hachioji Urban Hotel</b> MAP C-3	1-1-8 Koyasu-machi	☎ 042-660-7111
<b>Hachioji Sky Hotel</b> MAP A-1	2-3 Yoka-machi	☎ 042-623-1100
<b>The B Hachioji</b> MAP A-4	4-6-12 Myojin-cho	☎ 042-646-0111
<b>Hachioji Hotel New Grand</b> MAP F-3	6-1-6 Owada-machi	☎ 042-645-0015
<b>First Inn Hachioji</b> MAP B-2	6-2 Naka-cho	☎ 042-624-1120
<b>Marroad Inn Hachioji</b> MAP B-2	6-11 Misaki-cho	☎ 042-623-7111
<b>Hotel GRAN SPA</b> MAP B-3	2-1 Nakamachi	☎ 042-648-5111

### Takao & Ongata Area

<b>Oruri-no-ke</b> MAP B-3	2030 Kamiongata-machi	☎ 042-652-4126
<b>Kikuya Hotel</b> MAP D-4	1604 Takao-machi	☎ 042-661-4416

## Public Bath Facilities

<b>Tobuki Yuttarikan</b> MAP D-1	1798 Tobuki-machi	☎ 042-696-6113
<b>Yasuragi-no-yu Hachioji Onsen (hot spring)</b> MAP B-3	2-1 Naka-cho	☎ 042-648-5111
<b>FUROPPI</b> MAP D-4	1466-1 Hazama-machi	☎ 042-665-4126

## Buses and Taxis

### Bus Companies

<b>Keio Dentetsu Bus Hachioji Office</b>	☎ 042-642-2241
<b>Keio-bus Minami Minamiosawa Office</b>	☎ 042-677-1616
<b>Nishi Tokyo Bus Narahara Office</b>	☎ 042-623-1365

### Taxi Companies

<b>Asahi Kotsu Taxi</b> ☎ 042-661-7225	<b>Sanwa Kotsu Group</b> ☎ 042-622-8181
<b>ASKA TRAFFIC</b> ☎ 042-661-0248	<b>Taisei Kotsu</b> ☎ 042-622-3128
<b>Capital Group</b> ☎ 042-691-2222	<b>Takatetsu Kotsu</b> ☎ 042-661-7211
<b>Keio Jidousha</b> ☎ 042-642-9966	<b>Hachioji Kotsu Jigyo</b> ☎ 042-623-5111
<b>Sagami Kotsu</b> ☎ 042-628-5211	<b>Hachinan Kotsu</b> ☎ 042-642-3371



Charcoal grilled chicken

### Ukai Toriyama

Situated on an expansive site in the verdant inner area of Mt. Takao, this restaurant offers charcoal grilled chicken, beef and seasonal dishes enjoyed around a hearth in a sukiya-style (teahouse-style) room. Forget the hustle and bustle of daily life and relax for a while amid the tranquility of the traditional Japanese garden. About 10 minutes by shuttle bus from Takaosanguchi Station on the Keio Line

### Ukai Chikutei

Savor Ukai's seasonal and elaborate *kaiseki* cuisine (traditional Japanese seasonal cuisine) in the dignified ambience of inner Takao, surrounded by the peaceful sounds of a gentle breeze blowing through a bamboo grove and the murmuring of a limpid brook. About 10 minutes by shuttle bus from Takaosanguchi Station on the Keio Line



Tofu cuisine

### Tofuya-Ukai Owada

Pass through the noren (hanging curtain) at the entrance, and you step back in time to the captivating world of Edo. Enjoy the exquisite home-made tofu dishes and seasonal menu in an Edo-like atmosphere enhanced by vibrant decor and enchanting music of that era. About 10 minutes by bus from JR Hachioji Station (lighting at the Ishikawa-Iriguchi bus stop)



Premium steaks and grilled dishes

### Hachioji Ukai-tei

Enjoy prime steak and seasonal ingredients in this magnificent mansion built on a beautiful hill, a perfect blend of East and West. This restaurant promises you a meal of pure bliss. About 10 minutes by taxi from JR Hachioji Station

**Ukai Toriyama**  
☎ 042-661-0739

**Ukai Chikutei**  
☎ 042-661-8419

**Tofuya-Ukai Owada**  
☎ 042-656-1028

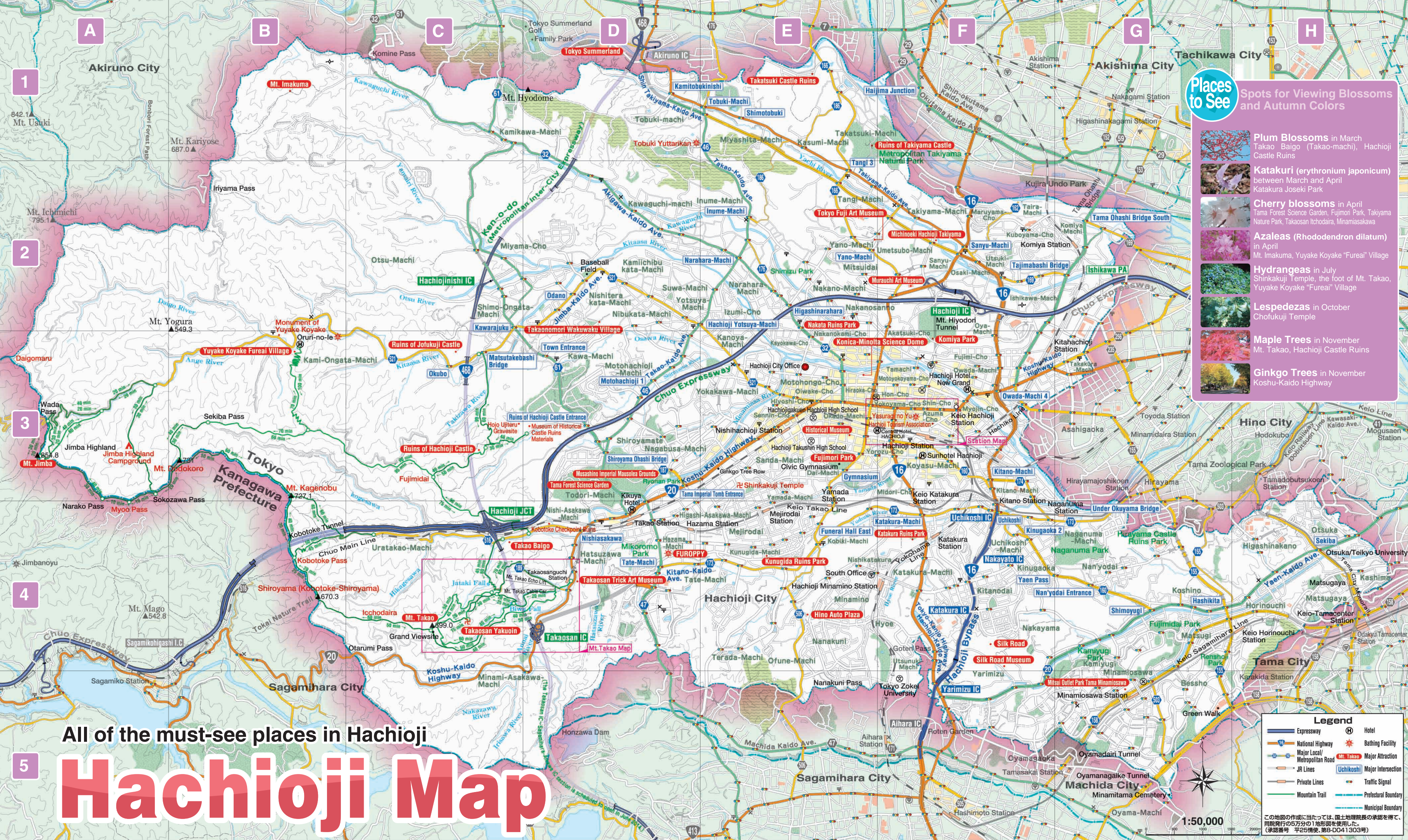
**Hachioji Ukai-tei**  
☎ 042-626-1166



U K A I







All of the must-see places in Hachioji

# Hachioji Map

Places to See

Spots for Viewing Blossoms and Autumn Colors

**Plum Blossoms** in March  
Takao Baigo (Takao-machi), Hachioji Castle Ruins

**Cherry blossoms** in April  
Tama Forest Science Garden, Fujimori Park, Takiyama Nature Park, Takaosan Ichodaira, Minamisakawa

**Azaleas** (Rhododendron dilatatum) in April  
Mt. Imakuma, Yuyake Koyake "Fureai" Village

**Hydrangeas** in July  
Shinkakui Temple, the foot of Mt. Takao, Yuyake Koyake "Fureai" Village

**Lepesedzas** in October  
Chofukui Temple

**Maple Trees** in November  
Mt. Takao, Hachioji Castle Ruins

**Ginkgo Trees** in November  
Koshu-Kaido Highway

## Places to See

### Art Galleries and Museums

**Hachioji Yume Art Museum** MAP A-1

This museum opened on the second floor of View Tower Hachioji in October 2003. It is an art gallery amidst everyday life that all people can enjoy. In addition to the permanent exhibitions (stock exhibits), special exhibitions are held approximately six times every year. Workshops and lectures are also held.

Address: 8-1 Yoko-machi, Hachioji, 2nd Floor of View Tower Hachioji  
☎ 042-624-8777 HP: <http://www.yumemuseum.jp/>  
Business hours: 10:00 a.m. to 7:00 p.m. (Doors close at 6:30 p.m.)  
Closed: Mondays (Tuesday when Monday is a national holiday or substitute holiday), New Year holidays, during exhibit changeovers.  
Admission: Depends on exhibit.  
Access: 15-minute walk from the north exit of JR Hachioji Station, and 18-minute walk from Keio Hachioji Station. One minute walk from the "Yoka-machi ichome" bus stop  
Parking: Yoka-machi Yumekado Parking (paid)

**Murauchi Art Museum** MAP E-2

This museum features chairs and other furniture by famous world-class designers, each with a distinct warm tone. It also offers exciting works by modern French and Japanese artists, as well as an array of spectacular furniture-and-painting collaborations, a first in Japan. This museum has a special fun atmosphere that we as a furniture store are uniquely qualified to offer.

Address: 787 Sanyu-machi, Hachioji 3rd Floor of Murauchi Furniture Access  
☎ 042-691-6301 HP: <http://www.murauchi.net/museum/>  
Business hours: 10:30 a.m. to 5:30 p.m. Doors close at 5 p.m.  
Closed: Wednesdays (or the next day if a holiday falls on Wednesday), Year-end/New Year holiday  
Admission: Adults: ¥200, university and high school students: ¥100, junior high and elementary school students: ¥100. Saturday admission: Free of charge for junior high and elementary school students.  
Access: Free shuttle bus from the north exit of Hachioji Station 5-minute walk, immediately east to the Murauchi Furniture Access bus stop.  
Parking (free)

**Tokyo Fuji Art Museum** MAP E-2

A collection of approximately 30,000 pieces of art spread across a wide range of genres, including paintings, sculptures, crafts, and photographs from Japanese, Eastern, and Western countries. This is a permanent exhibition.

Address: 492-1 Yano-machi, Hachioji  
☎ 042-691-4511 HP: <http://www.fuji.or.jp>  
Hours: 10 am to 5 pm (purchase tickets by 4:30 pm)  
Closed: Mondays (Tuesday when Monday is a national holiday or substitute holiday), New Year holidays, during exhibit changeovers.  
Access: Get off at the Sotokajiguchi-seimon/Fujiyutan bus stop  
Admission: Adults: ¥800, high school students: ¥400, junior high and elementary school students: ¥200. Group tickets available  
Parking (free)

**Takaosan Trick Art Museum** MAP D-4

Enjoy the gags at the Trick Art Museum

Address: 1788 Takaomachi, Hachioji-shi  
☎ 042-667-1081 HP: <http://www.trickart.jp>  
Hours: 10 am to 7 pm (December-March: 10 am to 6 pm)  
Doors close 45 minutes prior to closing.  
Closed: No regularly scheduled holidays  
Access: One-minute walk from Keio Takaosanguchi Station.  
Admission: Adults: ¥1300, high school students: ¥1000, elementary school students: ¥700, toddlers and infants: ¥500. Group discounts available  
Parking available at the Takaosan Base municipal parking lot

**Hachioji City Historical Museum** MAP E-3

The storage and exhibition of Hachioji's valuable documents. Opened on April 1, 1967.

Address: 33 Ueno-machi, Hachioji  
☎ 042-622-8939  
Business hours: 9:00 a.m. to 4:30 p.m.  
Closed: Mondays, day after national holidays (the following Tuesday if the national holiday falls on a Friday, Saturday, Sunday, or Monday)  
Admission: Free  
Access: 15-minute walk from the south exit of Hachioji Station.  
Free Parking (15 vehicles)

**Silk Road and Silk Road Museum** MAP F-4

**Silk Road, city-designated historic site**  
This area, affectionately known as the "Silk Road," was once called the "Hamakaido" or "coastline road." It was used to transport silk manufactured in the Hachioji area as well as from Nagano, Yamanashi, Gunma, etc. for export. The site stretches approximately 1.5 kilometers from Gotenbashi to the Silk Road Memorial Stone, of which approximately one kilometer is unpaved. Because the area remains much as it was historically, it has been selected as one of the Cultural Affairs Agency's top 100 historic roads.

**Silk Road Museum**  
Archives on the Silk Road and the manufacture of silk thread, etc., are on exhibit. The remains of Yagishita Yoemon's house, who was a silk merchant, is located here.

Address: 989-2 Yarinizu, Hachioji  
☎ 042-676-4064  
Business hours: 9:00 a.m. to 5:00 p.m. (4:30 p.m. between November and February)  
Closed: Monday (Tuesday if Monday is a national holiday), New Year holidays  
Admission: Free  
Access: Bus from Minami-Osawa Station to Kinno-Michi Iriguchi, and from there about 10-minute walk.  
Free parking (seven vehicles)

## Places to See

### Historic Ruins and Cultural Assets

**Ruins of Hachioji Castle, designated as a national historical relic site** MAP C-3

Hojo Ujiyuru's castle from the Warring States Period, renamed Hachioji Castle after the Hachioji Gongen (Shrine) located within and designated as one of Japan's best 100 castles in February 2006. The castle fell from an attack by Toyotomi Hideyoshi. The castellan's residence and the wooden bridge ruins remain at the mountain base while the central bailey and Hachioji Shrine ruins are on the summit. It is a one-hour climb to the ruins, with views of plum blossoms and autumn colors along the way.

Access: Bus from the north exit of Takao Station to the cemetery, and then 15-minute walk.  
Parking (for 50 vehicles)

**Ruins of Takiyama Castle, designated as a national historical relic site** MAP E-1

It is said that Takiyama Castle was built by Oishi Sadashige in 1521. It was here that a battle was fought by Hojo Ujiyuru and Takeda Shingen. It is famous for its 5,000 cherry blossom trees that bloom in the spring.

Access: Bus from Keio Hachioji Station or the north exit of JR Hachioji Station to Takiyama Castle, and then on foot.  
No parking available

## Recreation Hiking in Hachioji!

Popular hiking spots with easy access across Mt. Takao and Mt. Jimba

**Mt. Jimba** MAP A-3

The 360-degree panorama from the summit is spectacular. When the weather is fine, Mt. Fuji, metropolitan Tokyo, and Sagami Bay can be seen in the distance. The symbolic White Horse statue is also located on the summit.

Access: 90-minute walk from the Jimba Kogen bus stop accessed by bus from the north exit of Takao Station.

**The most steeply-inclined cable car in Japan** MAP D-4

A cable car that boasts Japan's steepest inclination (31.18 degrees) takes climbers midway up Mt. Takao. The views available from the cars change with the seasons. In particular, the autumn season provides the most spectacular panoramas. Also, the two-seater Echo Lift provides different views on the way up and down. The Beer Mount beer garden is open at Takao Station in the summer months and attracts excited crowds.

Takaotzan Denetsu  
☎ 042-661-4151  
HP: <http://www.takaotzan.co.jp/>  
Tickets: Adults: One-way: ¥480, round-trip: ¥930. Children: One-way: ¥240, round-trip: ¥460 (can be used for both the cable car and lift).

**Takaosan Yakuoin Temple** MAP C-4

Founded approximately 1260 years ago, this is a head temple of the Chisan-ka branch of Shingon Buddhism and is one of the three largest head temples in the Kanto region. It bustles with worshippers all year round. The Buddhist cuisine that uses seasonal ingredients is highly recommended (reservations required).

☎ 042-661-1115  
Fax: 042-664-1199  
HP: <http://www.takaosan.or.jp/>

**Mt. Takao** MAP C-4

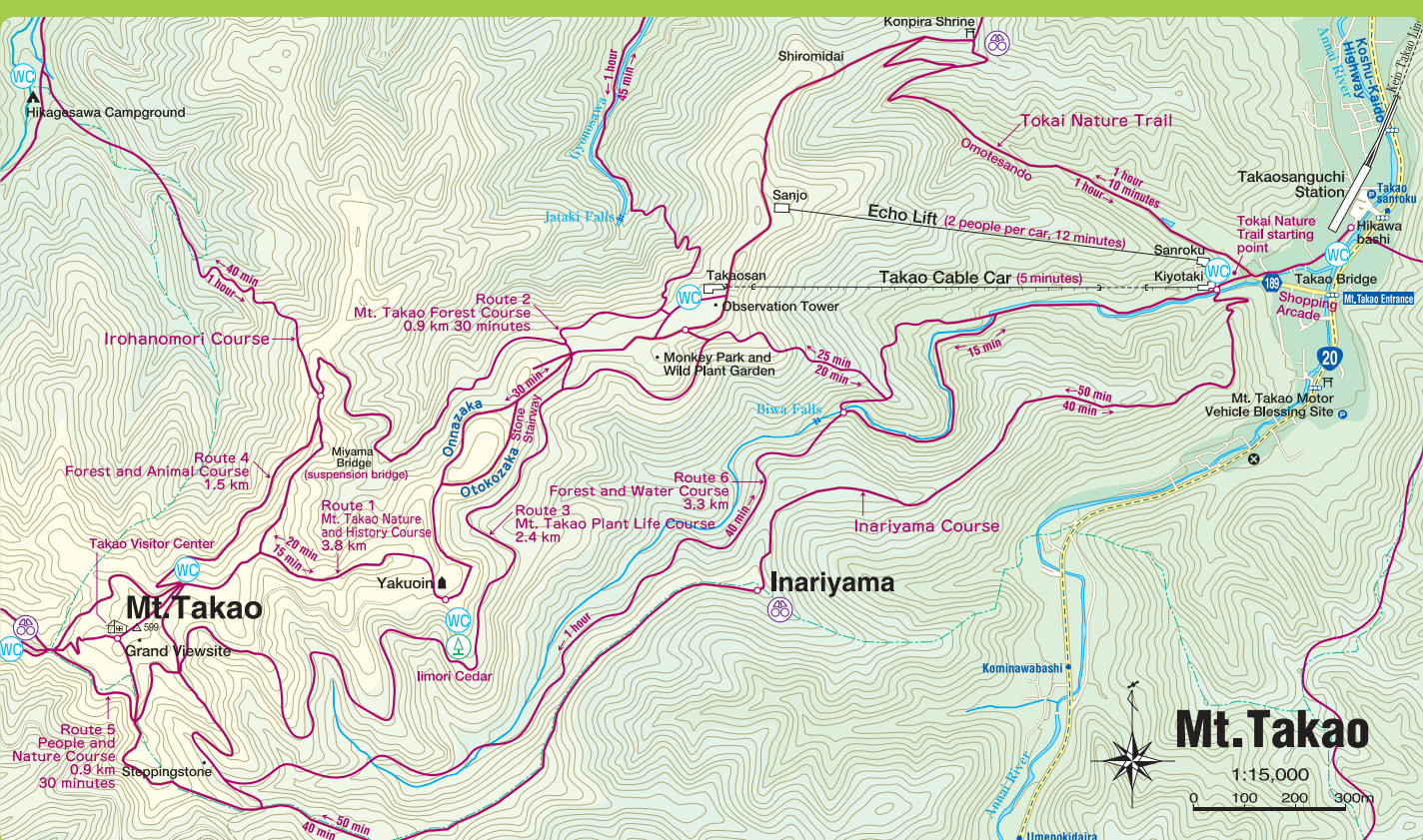
With an easy climb to the peak, this mountain is visited by 2.5 million people every year. The main attraction is the six mountain nature research routes, each with a different theme and skill level. Whichever route you chose, you will still reach the summit within about 1.5 to 2 hours. There are many attractive locations to visit, such as the Takaosan Yakuoin Temple, the monkey park and the wild plant park. The many restaurants and shops cater to all food and souvenir requirements.

Access: A short walk from Takaosanguchi Station.

**Topics**  
Highly-acclaimed by Michelin! Mt. Takao was awarded the highest 3-star evaluation in VOYAGEUR PRATIQUE JAPON published in 2007.

Japan

© MICHELIN 2007



## Recreation

### Day-trip communal bathing and dining available Yuyake Koyake Fureai Village

The writer of the nursery rhyme Yuyake Koyake, Uko Nakamura was born in Kami-Onogata and his documents and photographs are exhibited together with Shinzo Maeda's works. In addition to seasonal events, this facility provides recreational activities, including camping and visits to the Kitaasa River. The fresh vegetables sold from farmers' markets are especially recommended. You can also feel the relaxing atmosphere of the rural mountain region with the Oruri-no-le Inn's panoramic views from its baths, as well as the Iroribata restaurant's hand-made buckwheat noodles and seasonal tempura.

Address: 2030 Kami-Onogata, Hachioji  
☎ 042-652-3072  
HP: <http://yuyakekoyake.jp/>  
Business hours: 9:00 a.m. to 4:30 p.m. (4:00 p.m. between November and March)  
• Subject to change during events.  
Closed: Open all year  
Admission: Adult ¥200 Junior high school students and younger: ¥100; free of charge for children under four Saturday admission: Free of charge for junior high school students and younger • Group discounts available.  
Access: 30-minute bus ride to Yuyake Koyake from the north exit of Takao Station on the Nishitokyo bus.